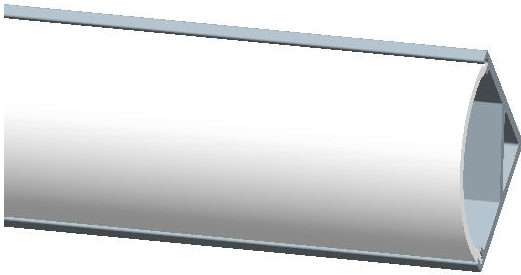
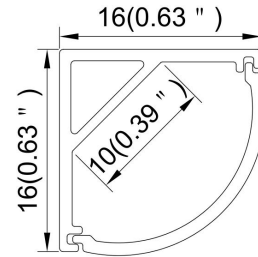


Model : ALP006



### Dimension



### Specification

Aluminum Profile	6063-T5
Diffuser	PMMA matte cover/ PMMA semi-clear cover /PMMA clear cover
Length	2000mm / 2500mm / 3000mm
Weight	0.138kg/m
Max LED Strip Width	10mm
Max Power	15W/m
Beam angle	100°
Finish	Silver / Black anodized , Powder coated white / black or other colors
Installation	Surface

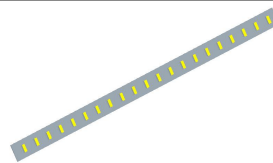
### Accessories



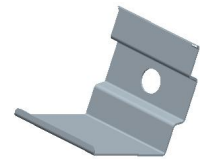
End Cap With Hole(ABS)



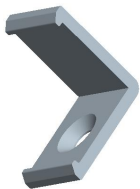
End Cap Without Hole(ABS)



LED Strip



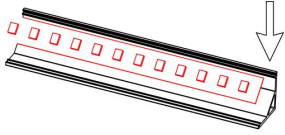
Stainless clip



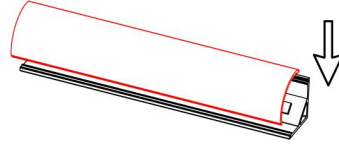
Plastic clip

### Steps of Installation

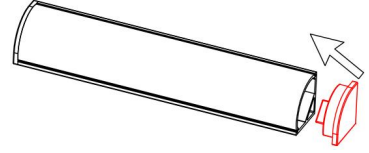
1. Stick the LED strip



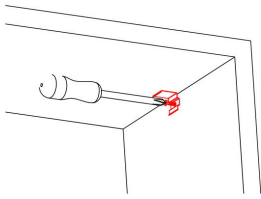
2. Press the diffused cover



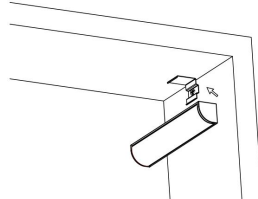
3. Insert the end caps



4. Install the mounting clip chosen



5. Click the fixture to the mounting clip



6. Installation completed

