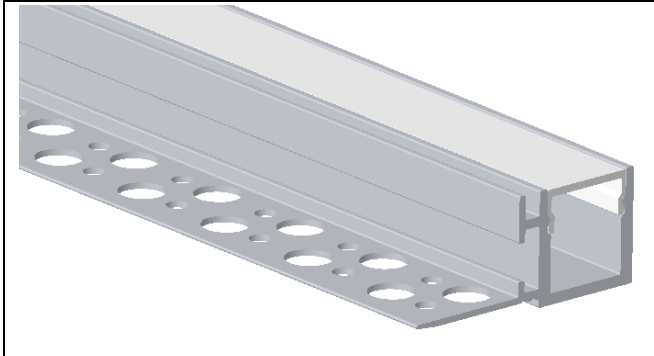
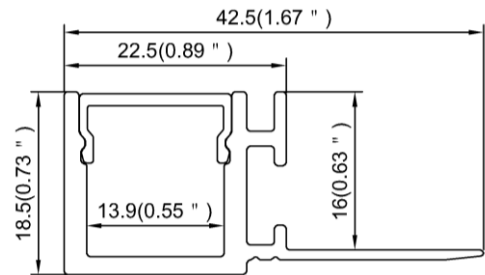


Model : ALP084



Dimension

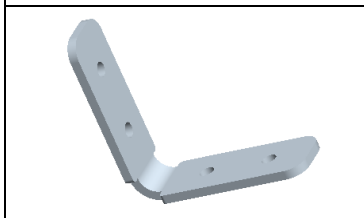


Specification

| | |
|---------------------|---|
| Aluminum Profile | 6063-T5 |
| Diffuser | PC diffused cover |
| Length | 2000mm / 2500mm / 3000mm |
| Weight | 0.433kg/m |
| Max LED Strip Width | 13mm |
| Max Power | 12W/m |
| Beam angle | 100° |
| Finish | Silver / Black anodized , Powder coated white / black or other colors |
| Installation | Recessed |

Accessories

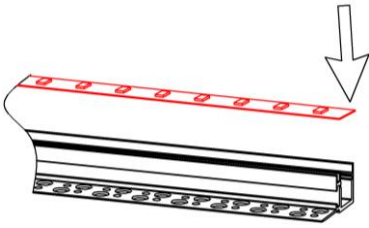
| | | | |
|------------------------|---------------------------|-----------|-----------------------|
| | | | |
| End Cap With Hole(ABS) | End Cap Without Hole(ABS) | LED Strip | 180° Connector(Metal) |



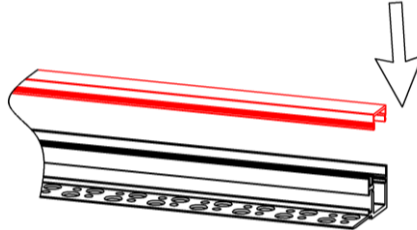
90° Vertical Connector(Metal)

Steps of Installation

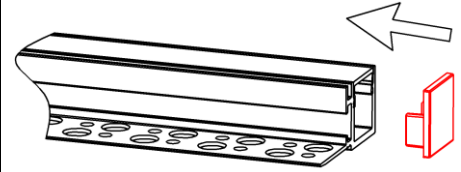
1. Stick the LED strip



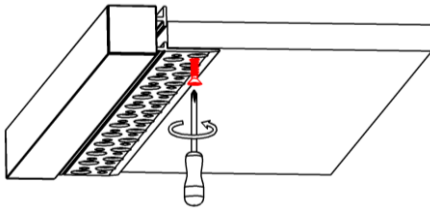
2. Press the diffused cover



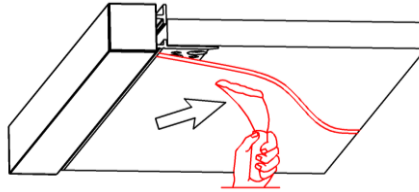
3. Click the end caps



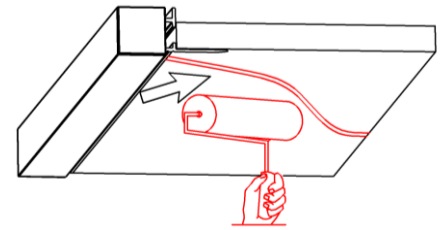
4. Mounting the assembled fixture



5. Plaster on the fixture & drywall



6. Painting on the fixture & drywall



7. Installation completed

