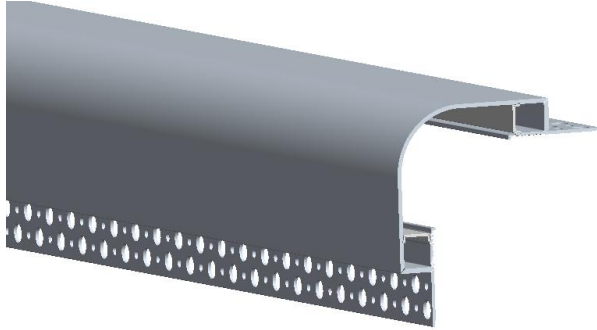
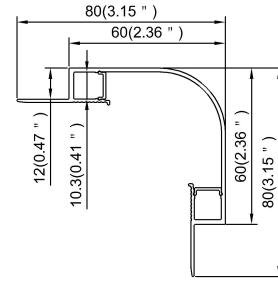


Model : ALP168



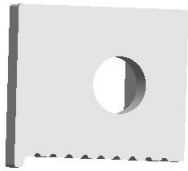
Dimension



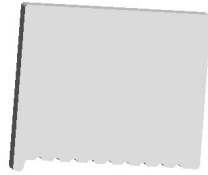
Specification

Aluminum Profile	6063-T5
Diffuser	PC diffused cover
Length	2000mm / 2500mm / 3000mm
Weight	0.786 kg/m
Max LED Strip Width	10mm
Max Power	15*2W/m
Beam angle	100°
Finish	Silver / Black anodized , Powder coated white / black or other colors
Installation	Recessed

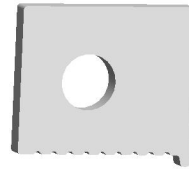
Accessories



End Cap A With Hole(ABS)



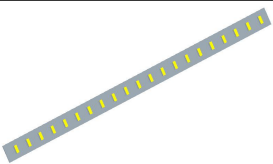
End Cap A Without Hole(ABS)



End Cap B With Hole(ABS)



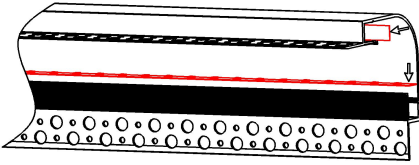
End Cap B Without Hole(ABS)



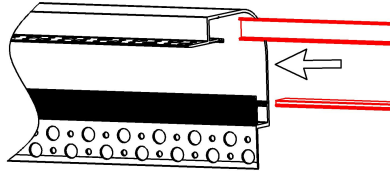
LED Strip

Steps of Installation

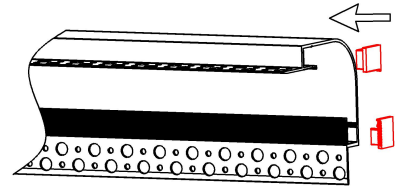
1. Stick the LED strip



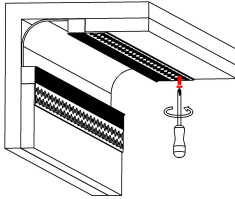
2. Slide the diffused cover



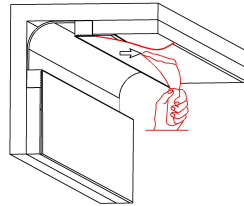
3. Click the end caps



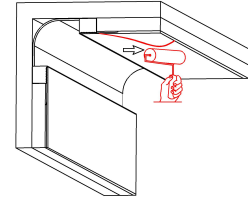
4. Mounting the fixture



5. Plaster on the fixture & drywall



6. Painting on the fixture & drywall



7. Installation completed

